

## E4231L - Elipta Compact Wall Spotlight



### Installation notes

Ensure mains supply is isolated prior to installation of this product.

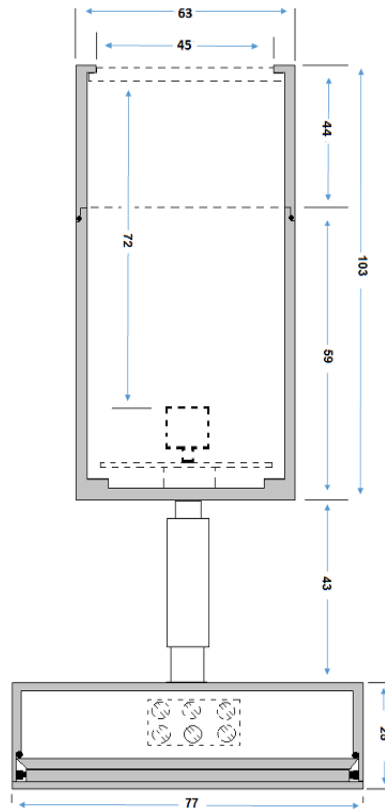
Cable connections can be made using a T9966 IP68 in-line connector or any IP rated junction box.

Refer to the instruction manual for further guidance.

**Note** – This product must be installed by a qualified electrician.

Part code	E4231L
Diffuser	Clear
Dimensions (mm)	Body – 103x63
Construction	Aluminium
Finish	Black powder coat
Class	Class II
IP rating	IP65
Maximum wattage	LED - 10W
Lamp base	MR16
Lamp included	No
Dimmable	Dependant on lamp
Input voltage	12V
Net weight (g)	443
Gross weight (g)	492
Warranty	2 Years
Manufactured in accordance with	BS EN 60598
Origin of manufacture	PRC





## 2 YEAR WARRANTY

Powder Coated Aluminium  
Body & Fitting

Exclusions: Damage by machinery, animals or the use of incorrect cleaning materials. Corrosion due to exposure to salt or chlorine. Damage due to incorrect installation practices. Responsibility for 3rd party cost; indirect or consequential loss.

## 2 YEAR WARRANTY

Internal wiring  
& lampholder

Exclusions: Damage due to incorrect lamp fitting or lamps above specification. Responsibility for 3rd party cost; indirect or consequential loss